



# The 4-H Connection



Vol. VI - Issue 8

Schedule of Events

August 2009

Date	Event/Location/Time	Contact	Phone
<b>AUGUST</b>			
6-9	California 4-H State Leadership Conference, UC Merced	Leah Spaulding	559-685-3309, x 222
12	Community Club Leader Dinner Meeting, *6:30 P.M.	Leah Spaulding	559-685-3309, x 222
14	<b>DUE:</b> Agenda items for Leader Council, by 5:00 P.M. Send to Janice Gish, 24313 Ave. 80, Terra Bella, CA 93270-9646	Janice Gish	559-535-0938
15	<b>SAVE THE DATE:</b> Record Book Judging, *8:45 A.M.	Leah Spaulding	559-685-3309, x 222
17	Leader Council Meeting, *7:00 P.M.	Janice Gish	559-535-0938
19	<b>SAVE THE DATE:</b> Treasurer Books Review, *6:30 P.M.	Carla Sousa	559-685-3309, x 221
20	Shooting Sports Committee Meeting, *7:00 P.M.	Leah Spaulding	559-685-3309, x 222
25	New Leader Orientation, *7:00 – 9:00 P.M.	Leah Spaulding	559-685-3309, x 222
26	Horse Committee Meeting, *7:00 P.M.	Kim Pitigliano	559-684-9138
28	Tulare County Fair Entry Forms Due by 6:00 P.M. to Tulare County Fair Office, 215 E. Martin Luther King, Tulare	Tulare Fair Office	559-686-4707
<b>SEPTEMBER</b>			
7	Cooperative Extension Office Closed		
8	<b>DUE OR POSTMARKED:</b> Applications for Ruby Star & Emerald Star, 4437-B S. Laspina St., Tulare 93274	Leah Spaulding	559-685-3309, x 222
14	<b>DUE: RSVP</b> for County Awards Night & Talent Request	Shari Connelly	559-685-3309, x 203
14	<b>DUE:</b> Talent Request Form for County Awards Night	Shari Connelly	559-685-3309, x 203
16-20	Tulare County Fair, 215 Martin Luther King Jr. Ave., Tulare	Tulare Fair Office	559-686-4707
21	New Leader Orientation, *7:00 – 9:00 P.M.	Leah Spaulding	559-685-3309, x 222
28	County Awards Night, Tulare County Agricultural Building, 4437 S. Laspina St., Tulare		

If you require any accommodations in order to participate in any of the 4-H YDP events, please contact Leah Spaulding at 559-685-3309, ext. 222, at least two weeks before the event.



## ENROLLMENT FOR 2009-2010

The Tulare County 4-H On-line Enrollment Program is not accessible at this time. The state is updating the program and correcting some programming errors. Your Community Club Leaders will inform members and volunteers when the program is available and what procedures will be required for re-enrollment and new enrollment for the 2009-10 program year. If you were a **member in good standing** for the 2008-09 program year, you do not need to worry about re-enrolling or updating your information to participate in any activities such as state or county fair. If you are making changes for these fairs, please let your Community Club Leader know and you will be able to update your profile and enrollment information after your club leaders attend the Community Club Leader Dinner and are given the club enrollment information and procedures. **Please contact your Community Club Leaders for club specific information.**

## TALENT REQUESTED COUNTY AWARDS NIGHT

At this year's County Awards Night, being held September 28, we would again like to feature some of our talented 4-H members. If you are a 4-H member who plays a musical instrument, sings, recites poetry or has another performing art talent and are interested in entertaining during our social gathering at County Awards Night, please fill out the form below and submit it to the Cooperative Extension Office by September 14. Performances can be individual or group. We have a 30 minute period available, so if we get an overwhelming response, we may have auditions. Also, the number of responses may also determine the length of each performance allowed.

Name(s) \_\_\_\_\_

Club \_\_\_\_\_

Phone \_\_\_\_\_

Talent to be performed \_\_\_\_\_

Length of performance \_\_\_\_\_

Please remit to UCCE Office by September 14, 2009  
To: 4-H Talent Request  
4437-B S. Laspina St.  
Tulare, CA 93274

## RSVP NEEDED FOR COUNTY AWARDS NIGHT

County Awards Night will be held on Monday, September 28. Please help us with an expected head count by either filling out the form below or calling Shari at 559-685-3309, ext 203 to RSVP. This will help out Hi 4-H with the expected food amounts needed, as well as seating arrangements. Everyone is welcome! Please RSVP by Monday, September 14.

### County Awards Night RSVP

Name: \_\_\_\_\_

Club: \_\_\_\_\_

Phone: \_\_\_\_\_

Number in Party: \_\_\_\_\_

### Mail or Fax by September 14 to:

County Awards Night RSVP  
4437-B S. Laspina St.  
Tulare, CA 93274

Fax: 559-685-3319



## ORIENTATION MEETING FOR NEW PROSPECTIVE LEADERS

All new prospective leaders for the 2009-2010 year must attend an orientation which includes being fingerprinted **before December 1, 2009**. This orientation is for all new leaders, whether it is for a project, transportation or an activity. If an adult is returning after being away from 4-H for over a year (was not a 4-H leader during the 2008-2009 year), they must attend an orientation as a refresher and be fingerprinted again.

**When:** Tuesday, August 25, 7:00 – 9:00 P.M.  
Monday, September 21, 7:00 – 9:00 P.M.  
Tuesday, October 13, 7:00 – 9:00 P.M.  
Thursday, November 19, 7:00 – 9:00 P.M.

**Where:** Agriculture Building, 4437 S. Laspina St., Tulare

Please R.S.V.P. to Shari, 559-685-3309, ext. 203 two days before the date of the orientation. The orientation will be cancelled if there is no response as of that date.

Policy requires all prospective volunteers to be "card carrying" before leading a project meeting or acting in any volunteer capacity.



## GREAT TIMES AT TULEQUOIA 4-H CAMP

The tiki torches were lit each night at campfire for Tulequoia 4-H Camp's Survivor Tribal Council. 143 youth and leaders attended the 2009 weeklong event held at the YMCA campgrounds on Lake Sequoia. Camp photos are available for viewing at: [http://cetulare.ucdavis.edu/4-H\\_Program/4-H\\_Camp.htm](http://cetulare.ucdavis.edu/4-H_Program/4-H_Camp.htm) . Was your club represented at camp? Check out the following:

CLUB	TOTAL	LEADERS	MEMBERS
Blossom Trail	2	0	2
Burton	13	2	11
Ducor	1	0	1
Elbow Creek	8	2	6
Fairmont	3	1	2
Fowler	1	0	1
Golden Tri C	2	1	1
Harmony Hills	1	0	1
Kerman	16	3	13
Kingsburg	16	3	13
McKinley	2	0	2
Oakdale	7	1	6
Palo Verde	18	3	15
Pine Flat	1	0	1
Pixley	1	0	1
Pleasant View	2	0	2
Reedley	19	4	15
Renegades	3	1	2
Rural Route	14	3	11
Springville	2	0	2
St. Aloysius	7	0	7
Tulare	3	1	2
Waukena	1	0	1
<b>TOTAL</b>	<b>143</b>	<b>25</b>	<b>118</b>

The following poem was written by one of the campers, Montanna Tarkington, St. Aloysius 4-H Club. Each night at campfire, Montanna shared a poem that she wrote. This poem and another, *Whoosh*, can also be viewed at the website listed above.

### 4-H CAMP

by Montanna Tarkington

Head, heart, hands, health  
to us life isn't about wealth.  
To make a difference, take a stand  
creating things with our hands.  
Once a year we gather here  
to practice our skills without fear.  
Circling the flames burning bright  
we seem entranced by the firelight.  
Singing songs of jubilee  
merrily and happily.  
Eating dirt, worms, and bugs  
arguing about fried chicken and stuff  
Laughing at skits, creative and funny

be sure to shower nice and sudsy.  
Jump in the lake, dive right in  
fish for competition, you might just win.  
Boats and relay activities and crafts and crafts  
this camp sure to be on your map.  
As stars appear they seem so near  
twinkling objects that burn and sear.  
Sit with friends, have your fun  
eat your meals but save me some.  
Remember always your 4-H roots  
for as we stand, head, heart, hands and health  
Is our plan.

Don't miss out on all the fun at the 2010 Tulequoia 4-H Camp. Be watching for the dates.

## 4-H CAMP – LOST AND FOUND

Did you forget a towel, t-shirt, or shoes at camp? If so, call Shari at 559-685-3309, ext. 203 to claim your loss!

## IMPORTANT DATES TO SAVE!

- August 12**            Community Club Leader Meeting
- August 15**            Record Book Judging
- August 19**            Treasurer's Book Review
- September 28**        County Awards Night
- October 22**            Officer's Training



## 4-H TULARE CO. MAY FAIR LIVESTOCK AUCTION CHECKS

If you sold an animal at the 4-H Fair, have you picked up your check yet? Call Shari at 559-685-3309, ext. 203 to check on availability.



## LEADER COUNCIL MEETING

**When:** August 17, 2009, 7:00 P.M.

**Where:** Agricultural Building, 4437 S. Laspina St., Tulare

Leader Council meetings are open to all 4-H leaders and high school aged 4-H members. Come find out what will be happening for the upcoming 2009-2010 4-H program year. Hope to see you there!

## WHAT'S HAPPENING AT THE 2009 TULARE COUNTY FAIR?

All entry forms due by 6:00 P.M., August 28, 2009, to Tulare County Fair, 215 Martin Luther King, Tulare, 559-686-4707.

### NON-LIVESTOCK ACTIVITIES

**4-H Presentations** – Great way to start your 4-H year with a presentation under your belt! This is open to all 4-H members in good standing with his or her local club. The Community Club Leader in charge of club work MUST certify entry. Presentation can be an individual or team project. Participants must arrive 30 minutes prior to the start of event.



The contest will be Saturday, September 19, 7:00 P.M., in the Junior Building. Presentations may be on any family appropriate topic. **One ticket per demonstrator and one ticket for a parent/companion (per individual or team) will be left at Will Call.**

### Club Booth Entries – show pride in your club and the 4-H Program

– This activity is open to 4-H Clubs and FFA Chapters of Tulare County and Delano FFA. Limit of one booth per club or chapter. The feature exhibit booth provides members an opportunity to acquaint the public with a specific phase of their club programs. The booth can show what they have learned, the activities in which they have participated, or the contributions of their organization to their community. The booths are to be fully constructed by the 4-H members and only advised by the parents and leaders of the club. **Adult help may cause the exhibit to be disqualified.** Booths are to be constructed in the Junior Exhibit Building from 9:00 A.M. to 8:00 P.M. Friday, September 11 & Saturday, September 12 before opening day of the fair. Additional entry information can be found on page 48 of the Tulare County Fair Premium Booklet.

**Landscape Plot** – Eight (8) 10' x 15' spots are available. One entry per exhibitor per class. Additional spots may be applied for at time of entry for spots that are not filled (limit one additional spot per organization/individual). Additional spots will be awarded based upon date/time of request receipt. Plots are available to be worked on daily beginning Tuesday, September 8, 8:30 A.M. - 4:30 P.M. and must be completed by Monday, September 14, by 4:30 P.M. Two passes per spot per day will be issued for maintaining the garden. All maintenance i.e. watering, replacement of plants, must be done prior to fair opening each day. Enter through livestock gate. Gardens **MUST** be designed, constructed and installed by club members only. Adults are only to advise. **Adult help may cause the exhibit to be disqualified.** Additional entry information can be found on page 50 of the Tulare County Fair Premium Booklet.

### ANIMAL SHOW INFORMATION

**Horse Show** – Sunday, September 13. Check in – 8:00 A.M. Horse Show Judging – 9:00 A.M. Entry Fee \$8.00.

Open to Tulare, Kings, Fresno and Kern Counties - 4-H, FFA, and Independent Juniors. See page 76 of the Tulare County Fair premium booklet for more information.

**Dog Show** - Friday, September 18, 8:00 A.M. Entries are due on August 28 by 6:00 P.M. to the **Tulare County Fair Office**. For complete rules and additional information, please see page 82 of the Tulare County Fair premium booklet.

For more information and a complete livestock schedule see page 63 of the Tulare County Fair premium book.

Download a copy at:

<http://www.tularefair.org/premiumbook.html>

## TULARE COUNTY CATTLEWOMEN PRESENT THE 2009 "BEEF ROCKS" POSTER CONTEST AT TULARE CO. FAIR

Entry forms due August 28<sup>th</sup> by 6:00 P.M. Exhibits due September 3<sup>rd</sup> and 4<sup>th</sup>, 9:00 A.M. to 6:00 P.M. to the Tulare County Fair Office. Exhibits released on September 21, 9:00 A.M. – 6:00 P.M.

Individual poster contest open to all age groups and schools. Group poster contest open to 4<sup>th</sup> grade classrooms.

Best of Show Award, \$100. Cash awards offered per class: 1<sup>st</sup> \$50, 2<sup>nd</sup> \$35, 3<sup>rd</sup> \$15.

For more information and specific requirements please refer to Page 41 of the Tulare County Fair Premium Book.

<http://www.tularefair.org/premiumbook.html>



**Words to Live by:**

“Always bear in mind that your own resolution to succeed is more important than any one thing.”

Abraham Lincoln

## EMERALD STAR



What is an Emerald Star? The Emerald Star is a leadership and citizenship opportunity for 4-H members in the 8<sup>th</sup> grade and up. Any 4-H member who has achieved a Gold Star but has not previously held an Emerald Star, All Star, or State Ambassadorship may apply.

An Emerald Star applicant is to present a plan of proposed leadership, to be completed within the following six months. They must complete their plan, submit a self evaluation, show good leadership qualities and overall 4-H work.

Examples of past Emerald Star projects are: project show or field day, judging contests, slide-show or information pamphlet for county use in an area of need, mini fair and many more. Remember, these are just a few examples. The project can be something new or can be a revamping of a project that needs updating or to be done again.

To apply, an applicant must complete an application and submit it to the Cooperative Extension Office by the due date. An interview will be set up with a committee to review the project or plan. Once the project is complete, a final report will be submitted and a final interview will be set where the applicant will give an oral report handing in the original plan and final written report.

**Next Emerald Star applications are due or postmarked to the Cooperative Extension Office by September 8, 2009.**

Applications are available at the Cooperative Extension Office or online at:

[http://cetulare.ucdavis.edu/4-H\\_Program/Scholarship, All Star, Emerald & Ruby Star Guidelines & Applicat.htm](http://cetulare.ucdavis.edu/4-H_Program/Scholarship_All_Star_Emerald_Ruby_Star_Guidelines_Applicat.htm)

## RUBY STAR

In addition to the star ranks (Bronze, Silver, Gold and Platinum) achieved through the Personal Development Report (PDR), Emerald Stars, All Stars, and Ruby Stars are available on a leadership development level. Ruby Star is for older members who have achieved the rank of Emerald Star and/or All Star and wish to complete a leadership plan on a county level or above.

High school and older aged members are encouraged to work in a more independent environment. At this level, there must be overall guidelines, general direction, and assistance, but highly independent and individualized plans and programs. The plan of proposed leadership should be offered on a county, sub-sectional, sectional or state level. Ruby Star projects should generally be on a

level above and beyond the type of leadership plans used for Emerald Star projects.

### **Applicant Requirements:**

Applications will be accepted two times during the year at the same time as the Emerald Star, September and April.

**Next Ruby Star applications are due or postmarked to the Cooperative Extension Office by September 8, 2009.**



## CALIFORNIA STATE FAIR PRESENTS VET SCHOOL

Back by popular demand, the California State Fair is inviting the general public to spend the evening at the State Fair Livestock Nursery and learn to be a veterinarian.

Presented by:



Saturday, August 22, 5:00 P.M. – 9:00 P.M.  
Saturday, August 29, 5:00 P.M. – 9:00 P.M.  
Saturday, September 5, 5:00 P.M. – 9:00 P.M.

Vet School, an International Award Winning Program, will be held at the 2009 California State Fair Livestock Nursery.

UC Davis School of Veterinary Medicine, Veterinary Medical Teaching Hospital will be conducting hands-on activities and lessons to promote animal health and welfare. This special opportunity will give students ages 10-17 the chance to learn veterinary practices and procedures. Applications are due by Friday, July 31 and are available online at:

[http://www.bigfun.org/pdfs/exhibits/vet\\_school/Participant\\_Registration.pdf](http://www.bigfun.org/pdfs/exhibits/vet_school/Participant_Registration.pdf)

Contact Daneé McMahan – Administration Office – Vet School at 916-274-0477.



## 2008-2009 TULARE COUNTY 4-H SPONSORING COMMITTEE CONTRIBUTIONS

### Diamond Clover

Cal-Western Farming Co.  
Farm Credit West  
Tulare Rotary

### Gold Clover

Bassett Farms, Inc.  
Sierra Dairy Laboratory  
Riverbend Dairy

### Silver Clover

Ag Source Services, LLC  
Dinuba Lions Club  
Doug Les Farms  
Dreyer's Grand Ice Cream, Inc.  
El Monte Dairy  
Kiwanis Club of Tulare  
Mendes Calf Ranch  
The Mayflower Companies  
Visalia Sequoia Lions Club

### Bronze Clover

Bank of the Sierra	Gabriel Pena
Donald E. Bessey, CPA	Lone Oak Veterinary
Mid Valley Cotton Growers	Brownfield Trust
Brownfield & Keefer Ranch	Roche Oil, Inc.
Brownfield Ranch	SBS Ag
C.J. Shannon & Sons	Tulare County Farm Bureau
Dave & Carla Snell	B.A.S.F. Corporation
California Bean & Pea, Inc.	Stanley Stearns
Cartmill Dairy	Sturgeon & Beck
Forcum/Mackey Const.	Thelma Terry
M. Green & Co	United Wholesale Lumber
Marilyn Hadley	Van Beek Bros. Dairy
Richard & Marianne Hatfield	W & E Electric
Hillview Groves	George Watte & Sons
Linder Equipment Company	Frank & Janell Goulart
California Women for Agriculture	
Tulare Sunrise Rotary Club	

### Green Clover

All Creatures Pet Care	Tulare Veterinary Hospital
H.R. & Margaret Force	V.I.P. Pizza
Mr. & Mrs. Gardiner Harris	Webb & Son
Joanne Ledbetter	David Webster
Nuckols Ranch	Woodard Homes
Brandt Enterprises	

Don't forget to send a thank you note to our wonderful sponsors that give to us so generously. You will find their names and addresses on the back of your medals you receive.



## 2009 CALIFORNIA STATE FAIR

**Fair Dates: August 21 – September 7, 2009**

Entry Deadlines	
County Fair Best of Show	August 4
Cornish Meet	August 18
<b>Junior Livestock Show Dates (Beef, Sheep, Swine &amp; Market Goat)</b>	August 20-25
<b>Junior Dairy Cattle &amp; Dairy Goat, &amp; Pygmy Goat Show Dates</b>	August 26-30
<b>Fur &amp; Feather Show Dates</b>	
Junior Market Classes	August 19
Junior Rabbits	August 20-23
Junior Poultry	August 24-27
Junior Cavies	August 28-30
County Fair Best of Show Small Animal Showmanship	August 29
State Fair Master Showmanship	August 30
Exotic Birds	September 4-7
<b>Best of Show Youth Horse Show</b>	
Entry Deadline	August 4
Deadline to enter on-line	August 4
If entering on-line: Signature Acquisition Form Due	August 8
Youth Horse Show: English, Over Fences, Gymkhana (Rodeo Arena) 8:00 AM	September 3
<b>Deadline to enter: Equine Champion Challenge</b>	September 4
Youth Horse Show: Showmanship, Western (Rodeo Arena) 8:00 AM	September 4
Youth Horse Show: Trail (Rodeo Warm Up Area) 8-11 AM	September 4
Equine Champion Challenge (Time TBD) (Rodeo Arena)	September 4
<b>Dog Show</b>	
Dog Show & Canine Bowl	August 23

For additional information, contact:

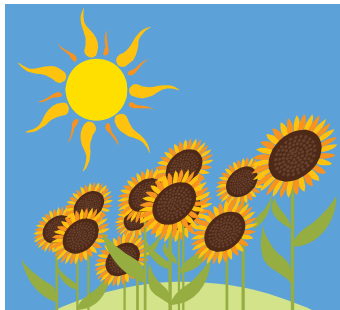
[entryoffice@calexpo.com](mailto:entryoffice@calexpo.com) or California State Fair, P.O. Box 15649, Sacramento, CA 95852-1538, Phone 916-263-3149. Visit <http://www.bigfun.org> for complete competition handbook and entry information.



# **ATTENTION CLUB REPRESENTATIVES AND INTERESTED LEADERS AND YOUTH!**

## **Important information and meeting dates for August:**

- August 6-9, California 4-H State Leadership Conference, UC Merced
- August 12, Community Club Leader Dinner Meeting, 6:30 P.M., Cooperative Extension Office
- August 15, Record Book Judging, 8:45 A.M., Cooperative Extension Office
- August 17, Leader Council Meeting, 7:00 P.M., Cooperative Extension Office
- August 19, Club Treasurer Books Review, 6:30 P.M., Cooperative Extension Office
- August 20, Shooting Sports Committee Meeting, \*7:00 P.M.
- August 25, New Leader Orientation, 7:00 P.M., Cooperative Extension Office
- August 26, Horse Committee Meeting, 7:00 P.M., Cooperative Extension Office



University of California  
Cooperative Extension  
4437B S Laspina St  
Tulare, CA 93274-9537

Nonprofit Org  
US Postage Paid  
Visalia, CA 93277  
Permit NO. 240



## 4-H Connection August 2009



Visit our Website at: <http://cetulare.ucdavis.edu>

Carla M. Sousa  
4-H Youth Development Advisor  
(559) 685-3309, Ext. 221

Leah Spaulding  
4-H Program Representative  
(559) 685-3309, Ext. 222

The University of California prohibits discrimination or harassment of any person on the basis of race, color, national origin, religion, sex, gender identity, pregnancy (including childbirth, and medical conditions related to pregnancy or childbirth), physical or mental disability, medical condition (cancer-related or genetic characteristics), ancestry, marital status, age, sexual orientation, citizenship, or service in the uniformed services (as defined by the Uniformed Services Employment and Reemployment Rights Act of 1994: service in the uniformed services includes membership, application for membership, performance of service, application for service, or obligation for service in the uniformed services) in any of its programs or activities.

University policy also prohibits reprisal or retaliation against any person in any of its programs or activities for making a complaint of discrimination or sexual harassment or for using or participating in the investigation or resolution process of any such complaint.

University policy is intended to be consistent with the provisions of applicable State and Federal laws.

Inquiries regarding the University's nondiscrimination policies may be directed to the Affirmative Action/Equal Opportunity Director, University of California, Agriculture and Natural Resources, 1111 Franklin Street, 6<sup>th</sup> Floor, Oakland, CA 94607, (510) 987-0096.